



Will Connect You
Innovation and Excellence in RF & Microwave



Antennas

25 years of antenna making experience

IMC has an extensive antenna product line ranging from 20MHz to 42GHz. IMC has the knowledge and the experience of more than 25 years of helping customers match the right antenna to a given application, as well as identify potential turn-key solutions that integrate wideband antennas with positioners and controllers to create an effective system.

These antennas include directional antennas such as log periodic, horn antennas, and Patch antennas, which are used in multiple applications including broadband surveillance, and tracking. They can be used as standalone antennas or as a part of a system. IMC also produces vast array of Omni directional antennas, such as conical spirals, back cavity spirals, dipole antennas and monopole antennas for broadband surveillance, air to ground communications and airborne (manned & unmanned) instrumentation antennas. IMC antennas meet airborne environmental conditions and have been qualified and used on aircrafts, UAVs, ships, missiles, robots and many other military, HLS and civil applications.





Back Cavity Spiral Antennas

IMC designs and manufactures a very large range of Spiral antennas. Our antennas are designed for airborne applications like EW Systems and they are capable of withstanding high environmental stress without performance degradation. IMC Spiral antennas can be amplitude, phase and gain tracking antennas. The back cavity antennas could be radomized if needed.

Capability Range

Specification	Range
Frequency	400Mhz – 42Ghz
Polarization	RHCP/LHCP
Squint	Up to $\pm 6^\circ$ max
Power	Up to 100W

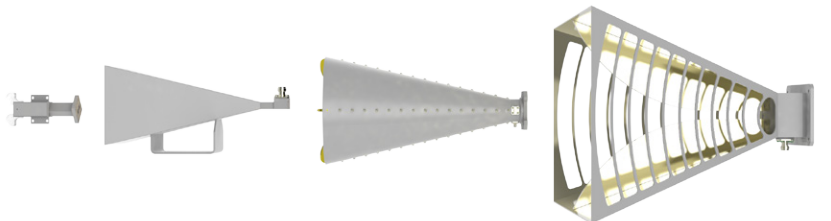


Horn Antennas

IMC manufactures a vast range of Horn antennas including Standard Gain, Dual Polarized, Circular Polarization, Multi-Octave and Broadband Dual Polarized Horn antennas that can operate up to 40 GHz. IMC Horn antennas are available either with Waveguide or Coaxial inputs. All of our Horn antennas are designed for harsh environmental conditions and can be customized according to customer requirements. The horn antennas could be radomized if needed.

Capability Range

Specification	Range
Frequency	400Mhz – 42Ghz
Input	Waveguide flange / coaxial connector
Power	Up to 1kW
Polarization	Vertical / linear / circular (external polarizer)



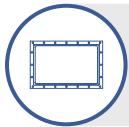


Blade Antennas

IMC designs and manufactures various types of Blade antennas. Our Blade antennas are metallic stack array that operate in a specific gain and pattern without a ground plane. All our Blade antennas are capable of withstanding high environmental stress without performance degradation. IMC Blade antennas are used in UAV's, High speed Aircrafts, Ground and Marine vehicles

Capability Range

Specification	Range
Frequency	UHF, L, S, C, X, Ku Band
Power	Up to 50W

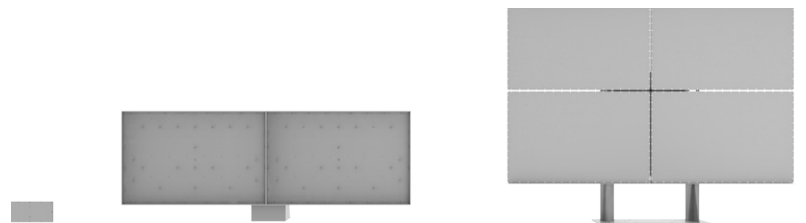


Patch Antennas

IMC offers a wide range of Patch antennas of various shapes and sizes. Our Patch antennas can be square, circular or cylindrical according to the customer requirements. Our Patch antennas operate in frequency range starting in UHF and up to Ku-Band and are used in Airborne (UAV, Aircraft, Rockets, Pods etc.), Ground and Marine platforms.

Capability Range

Specification	Range
Frequency	UHF – Ku-Band
Polarization	LHCP / Vertical / Horizontal / Linear / RHCP
Power	Up to 100w



Will Connect You

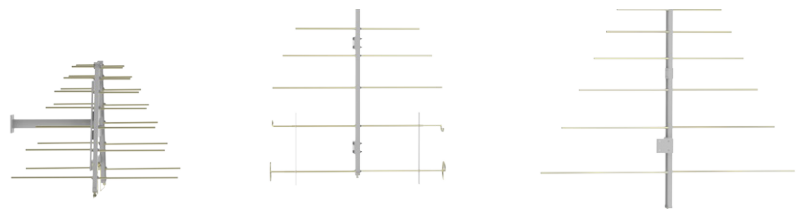


Log Periodic Antennas

IMC has developed various types of Log Periodic antennas and Feeds covering a wide frequency range. For frequency range of 400MHz up to 3GHz IMC uses rods as radiating elements, for frequency range of 1GHz up to 18GHz IMC uses printed circuit. Our entire Log Periodic antennas are designed to meet environmental conditions specified by the customer.

Capability Range

Specification	Range
Frequency	20 MHz – 3 GHz (rods) 1 GHz – 18 GHz (printed)
Power	Up to 30w0W
Mount fix	Rod / Tripod / Wall





Omni Antennas

IMC offers a broad range of Omni antennas in various polarizations and a wide range of frequencies. IMC Omni antennas are designed for high stress environmental conditions, some of our Omni antennas are supplied with radomes. IMC Omni antennas are used in Airborne, Ground and Marine vehicles and systems.

Capability Range

Specification	Range
Frequency	UHF Up to Ka-Band
Type	Dipole / monopole
Polarization	Vertical / Linear / RHCP / LHCP / 45° Slant Linear
Power	Up to 100W



Conformal Antennas

IMC has a vast line of Conformal Antennas covering a wide range of size and shapes. IMC's Conformal antennas are designed for airborne, ground and marine applications like UAVs, Pods, Rockets and Canon Shells, designed to withstanding high environmental stress without degradation in performance for amplitude matching, phase and gain tracking.

Capability Range

Specification	Range
Frequency	UHF Up to C-Band
Polarization	Circular, Cylinder & Cone



Will Connect You



IMC Industries is a worldwide leading provider specializing in state-of-the-art RF modules, microwave components and data link communication systems for defense, HLS and civilian applications.

IMC's products supply cutting-edge solutions for aerospace, ground and maritime platforms; each tailor-made configuration is suited for MIL-STD requirements and a variety of client needs.



IMC microwave industries Ltd. 6 Nahshon st. Petach Tikva 4927795 Israel
T+972-3-9300464 F+972-3-934056 M imc@imc-mw.co.il W www.imc-mw.com